

A close-up, slightly blurred photograph of a white POS terminal. The terminal has a red 'poslabo' logo on its surface. The background is dark and out of focus.

poslabo

# EcoPlus / EcoBravo

The world's first mass production  
of Android POS systems



MSR & i Button



Power Consumption is Less Than 10 Watts



Support Thermal Printer.

Light and Stylish Design



High Brightness VFD Display



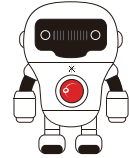
Fingerprint Reader



# EcoPlus / EcoBravo



Ready in Windows / Android / Ubuntu linux



- Android 4.2.2 / Ubuntu/ Windows7/ Windows8 Linux solution compliant
- Freescale i.MX6 Dual / Quad Core / Baytrail J1900 Processor technology
- 100% Fan-less design with Power Consumption less than 10Watt(Android Only)
- 15.6" LED display with 1366x768 wide screen technology
- 5Wire resistive touch or Projected Capacitive touch technology support
- WiFi & Bluetooth function support
- Fashion design suitable for stylish payment environment.



Award



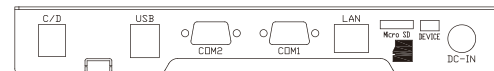
System		
CPU Support	CPU Support Freescale i.MX6 U / Q ARM Cortex-A9 Dual/Quad CPU Core 1000MHz	Intel® Celeron® Processor Bay-Trail J1900 up to 2.42Ghz
Memory	1Gb /2Gb DDR3	Support up to 4GB DDR3
Core Logic	Freescale i.MX6	Intel Bay-Trail
Net Work	10M/100M/1000M	
System weight	5 kgs	
Dimension (WxHxD)	320x 350 x 290mm	
O/S Compati	Android 4.2.2 Jelly Bean / Ubuntu Linux /	Windows7, POSReady 7, Windows 8
DC Input	24V	12V
Audio Output	Stereo with 2W speaker	
Power Supply	24V Power Adaptor	12V Power Adaptor
Storage		
Storage	eMMC 8G	HDD or mSATA SSD
Micro SD	1 x MicroSD slot	N/A
I/O Ports		
Ethernet	x 1 port	x 1 port
External Storage	MicroSD Slot x 1 support SDXC	mSATA or HDD
USB port	USB x 2 / OTG x 1 ( Micro USB )	USB x 4
Parallel Port	N/A	1xDB25
Cashdrawer	1xRJ11	1xRJ11
HDMI	x1(Quad Core Only)	N/A
mPCIe	mPCIe + USB x 1	mPCIe + USB x 1
RS-232	RS-232x2	RS-232x4
Display		
LCD	15.6" ( 1366 x 768 , 350 nits )	
Touch	5 Wires resistive touch	
Peripheral Options		
Printer	TP-260	
VFD Customer Display	20 columns x 2 lines, each column 5x7 dots RS232 (Default) Multi-language / Epson Commands	
MSR	JIS-I or II, ISO Track 1 / 2 / 3 COM Interface	
Color	Dark Grey/White	
O/S	Windows / Android 4.2.2 Jelly Bean / Ubuntu linux	
Wireless LAN	802.11 b / g / n	
Scanner	1D / 2D Barcode Reader	
Safety standards	FCC , CE	

### Models Features

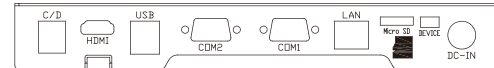
### Peripheral Options

### I/O Ports

A9 Dual Core



A9 Quad Core



EcoBravo X86 Windows Baytrail J1900

