

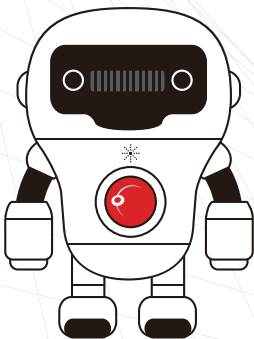
EcoPlus



Ready in Ubuntu Linux & Android



- Android 4.2.2 / Ubuntu/ Linux solution compliant
- Freescale i.MX6 Dual / Quad Core
- 100% Fan-less design with Power Consumption less than 10Watt (Android Only)
- 15.6" LED display with 1366×768 wide screen technology
- 5 wire resistive touch or Projected Capacitive touch technology support
- WiFi & Bluetooth function support
- Fashion design suitable for stylish payment environment.



System	
CPU Support	Freescle i.MX6 U / Q ARM Cortex-A9 Dual/Quad CPU Core 1GHz
Memory	1GB /2GB DDR3
Core Logic	Freescle i.MX6 U/Q
Net Work	10M/100M/1000M Base-T Fast Ethernet
Power Supply	24V Power Adaptor
System weight	4.6 kgs (10.13 lbs)
Dimension	400x 340 x 230 (WxHxD) mm
O/S	Android 4.2.2 Jelly Bean / Ubuntu Linux
Storage	
Storage	eMMC 8G
Micro SD	1 x MicroSD slot
I/O Ports	
Serial Ports	2 x external COM (w/ +5V, +12V selectable)
USB Ports	2 x external USB Ports
mPCIe	1 x internal
Ethernet	1 x 10/100/1000 Mbps (RJ45)
Audio	2 x 2W speaker
Cash Drawer	1 x RJ11
DC-IN	24V DC-IN
Power Switch	1 x Power Switch
Display	
LCD	15.6" LED Panel
Max. Resolution	1366 x 768
Brightness	220 nits
Touch Screen	5 wires resistive touch panel / P-CAP touch as an option
HDMI	HDMI 1.4 (Quad Core only)
Environmental	
Operating Condition	0°C ~ 40°C, 20%RH ~ 90%RH
Storage Condition	-20°C ~ 60°C, 10%RH ~ 90%RH
Peripheral Options	
Printer	3" Thermal Printer (TP-260 , Printing speed 260mm/s)
Customer Display	VFD Type, 20 columns x 2 lines, each column 5x7 dotsRS232 (Default) , Multi-language / Epson Commands
MSR	JIS-I or II, ISO Track 1/2/3 USB (default)
i-button	Read only, COM interface
Color	Dark Grey/White
Wireless LAN	802.11a/b/g/n dual band MIMO
RFID	ISO 14443A, UrtraLight,Mifare@PRO, DESfire
Safety standards	CE/FCC
NFC	ISO/IEC 14443A, ISO/IEC 14443B PCD 106kbit/s to 848kbit/s ISO/IEC 14443A, ISO/IEC 14443B PICC 106kbit/s to 424kbit/s MIFARE reader encryption mechanism (MIFARE 1K/4K) Reading NFC Forum tags (MIFARE Ultralight, Jewel, FeliCa open tag, ISO/IEC 14443-4) Reading Desfire card ISO/IEC15693 / ICODE VCD mode NFC-IP1 & NFC-IP2 protocols (ISO/IEC 18092 / ECMA 340 and ISO/IEC 21481 / ECMA 352) 106kbit/s to 424 kbit/s B' card emulation

Models Features



Lcd Led Backlight



Web Printer



Keyboard Widge



Backup & Restore



Thermal Printer



NFC



Wi-Fi



Bluetooth



3G

Peripheral Options



2nd LCD Display



VFD Customer Display



Magnetic Stripe Card



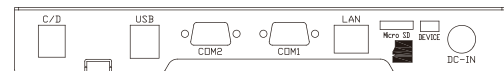
Barcode Scanner



Electronic Scales

I/O Ports

A9 Dual Core



A9 Quad Core

