



## METAL SOUND PROJECTOR

# CELL20T/EN



This elegant, high-quality sound projector is made of extruded aluminum coated with plastic. The robust construction ensures high protection against vandalism and makes it suitable for use in shopping centers, railway stations, prisons, etc.

The specially treated chassis provides excellent speech intelligibility as well as excellent reproduction of background music.



### EN54-24:2008 0359-CPD-0164 TYPE B

● <b>Standard</b>	Compliant to EN54-24 Compliant to BS 5839:8
● <b>Electrical</b>	
Rated power, Watts	20
Tappings 100 volt line, Watts	20/10/5/2.5
Transformer Impedance, Ohms 100V	500/1k/2k/4k
Tappings 70.7 volt line, Watts	10/5/2.5/1.25
Driver impedance, Ohms	8
Effective Frequency Range, Hz (BSEN60268-5)	110 - 16k
S.P.L. @ 4m, 1 watt, dB, 1/3 Octave, 1KHz	66
S.P.L. @ 1m, 1 watt, dB, Test Signal Bandwidth 100Hz-10kHz	88
S.P.L. @ 4m, Full power, dB, 1/3 Octave 1KHz	78
S.P.L. @ 1m, Full power, Test Signal Bandwidth 100Hz-10kHz	101
Dispersion at 1k/2k Hz, Degrees	180/120
● <b>Environmental</b>	
IP Rating	66
Min/Max Ambient Temp	-25°C to 70°C
Relative Humidity	≤95%
● <b>Mechanical</b>	
Dimensions, front dia x D, mm	140x191
Net weight, kg	2.3
Colour (Unless Specified)	RAL9016
Material	Aluminium with Stainless Steel Hardware. Aluminium grill
Mounting	Aluminium U bracket
Safety	Ceramic Block Thermal Fuse

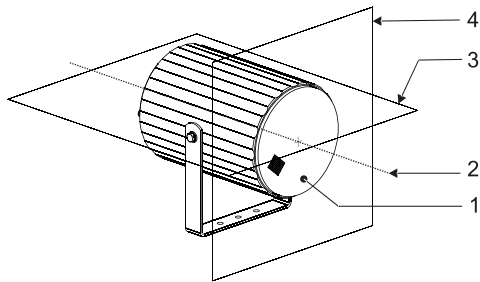
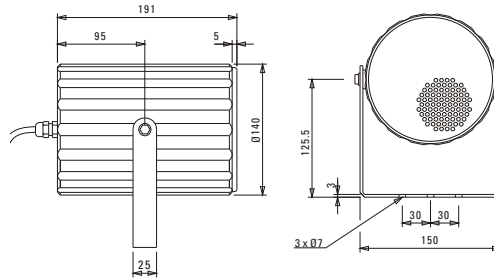


**PENTON**

# INSTALLATION GUIDE

## CELL20T/EN

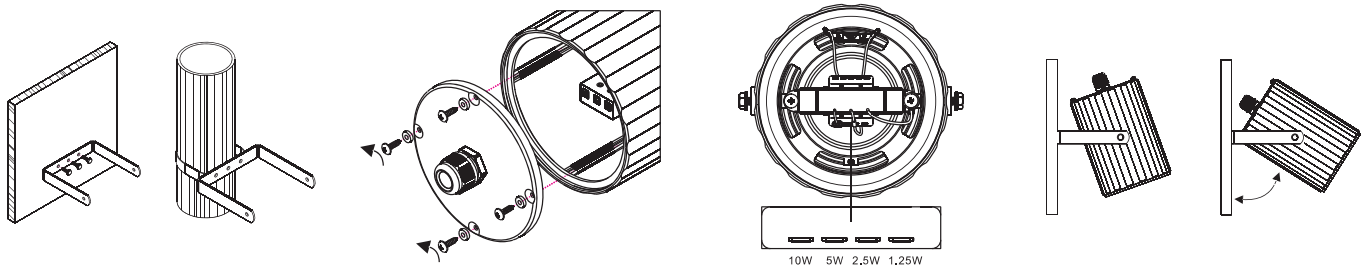
**EN54-24:2008**  
**0359-CPD-0164**  
**TYPE B**



1. Loudspeaker enclosure
2. Reference axis
3. Reference plane
4. Horizontal plane

**With Transformer:**  
**100V/70V line**

	White wire plus tapping				Black
100V	2.5W	5W	10W	20W	COM
70V	1.25W	2.5W	5W	10W	COM
IMP (Ω)	4K	2K	1K	500	



**1)** Remove the "U" bracket from the speaker. Align the bracket and mark the fixing points. Fix the bracket using suitable fixings (Not supplied).

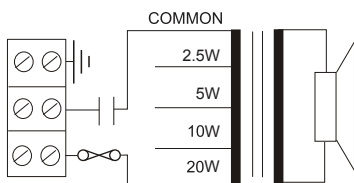
**2)** Remove the rear cover. The installation cable can be fitted via suitably rated glands into the 1 x 20mm gland entries provided.

**3)** The cable can then be terminated into the terminal block fitted to the rear of the speaker. The terminals are suitable to take "loop in"/"loop out" connections up to 2.5mm per core.

**4)** Select the desired tapping.

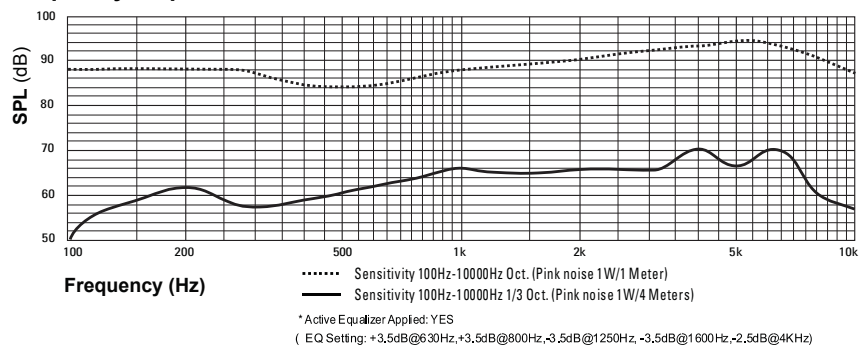
**5)** Re-fit the rear cover ensuring that the gasket is in place and that the screw fittings are fitted with their rubber washers to ensure the rear cover retains its weatherproof rating.

**6)** Re-fit the speaker to the "U" bracket. Position the speaker to the desired angle then tighten the fixings to secure in place.



**Circuit Diagram**

### Frequency response



Disclaimer: We reserve the right of changes and errors.

