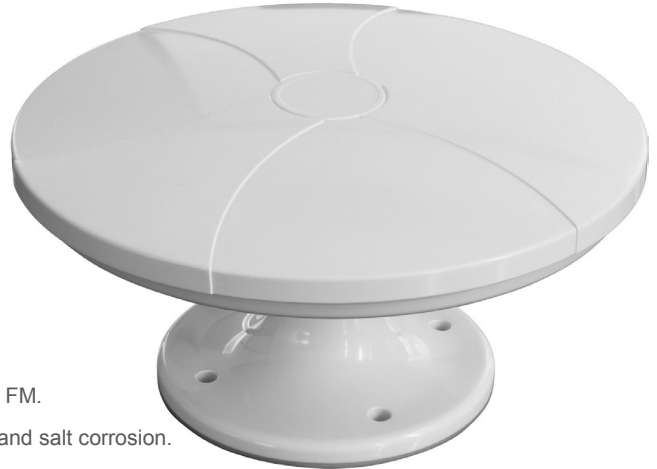


MDA-110 LTE CAMPING / BOAT ANTENNA

Datasheet



Features

Designed for boat and camping use.

Omni-directional digital terrestrial reception.

State-of-the-art low noise amplifier technology and circuitry.

Designed for VHF/UHF terrestrial TV, but also works with DAB / FM.

Manufactured in strong plastic which is resistant to UV sunlight and salt corrosion.

Max. wind speed 130 km/h (36 m/s).

PSU is included.

Technical specifications

Type:	Active
Frequency:	VHF: 47 - 240 MHz UHF 470 – 790 MHz
Gain:	VHF 21 ± 3 dB UHF 17 ± 3 dB
Connector:	F-connector
Wind loading:	Max. wind speed: 130 km/h (36 m/s)
Power supply:	AC 230 V / DC 12V Antenna power: 5 V

Dimensions and weight

Unit Size(WxDxH):	260 x 50 x 260 mm
Unit weight(Net):	1.30 Kg
Giftbox Size(WxDxH):	360 x 105 x 310 mm
Weight(Gross):	1.50 Kg
EAN number:	5711045796890
Item number:	18751
Shipping carton QTY:	10

Contents

- MDA-110 antenna
- Brackets for roof, pole and wall installation.
- Coaxial Cables (3 meter)
- Power inserter
- Power supply
- Operational Manual