



## Key Features

- Up to 1-Megapixel 1280x720 at 30fps
- H.264/MPEG-4/MJPEG triple codec
- Fixed Board LENS: 3.3mm/FOV86.8°(diagonal)
- Built-in IR for night viewing up to 10m
- 1T1R WIFI 802.11b/g/n with 3dBi Internal-Ant.
- Easy to adjust LENS angle without open cover
- Mechanical IR Cut Filter for true Day/ Night
- 1-way audio, 802.3af PoE/DC12V power
- EnGenius DDNS ,P2P and Push Notification
- Free iOS & Android APP for view / record
- Free bundle Video Management Software
- ONVIF compatible (Profile S)

# 1-Megapixel Day & Night Dome Network Camera

**EnGenius 1-Megapixel Dome Network Camera: Optimized surveillance system with robust performance and great efficiency**

### Day/Night HD Compact Dome

The EDS6115 is a compact fixed IR Dome camera suitable for a variety of applications. It features HDTV 720p quality with real-time recording at 30fps. It built-in mechanical infrared cut removable (ICR) filter and paired with a powerful IR LED illuminator with a 10 meter range.

### Easy to adjust LENS and Installation

It support adjust view angle by T-screwdriver & mount plate for manual Pan & Tilt without open the Dome cover.

### EnGenius DDNS, P2P and Push notifications

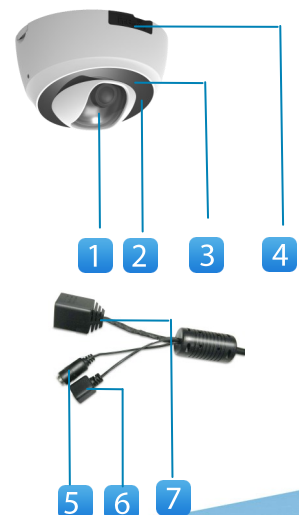
The camera free bundle EnGenius DDNS and P2P communication , it is real plug and play. No difficult network/router settings required. When the IP Camera detects movement or sound, a direct notification is send to your smartphone or tablet.

### Free Mobile APP and Video Management software

Support for iOS / Android APP allows mobile users to view a live video and record from internet. Also free bundle up to video management software to help to easily monitor and record.

### Physical Interface

1. IR LEDs
2. Built-in LENS
3. Built-in MIC
4. Micro SHDC slot / Reset button
5. DC12V power in
6. WPS, Reboot, Reset button
7. RJ-45 with 802.3af PoE



## Technical Specifications (HW)

### Camera

- Image Sensor:  
1/4" 1-Megapixel Progressive Scan CMOS
- LENS: Fixed board LENS, f=3.3mm /F1.8  
F.O.V: 86.8°(diagonal)
- Day/Night: Removable IR-cut filter
- Minimum illumination:  
Color (IR-off): 0.5Lux / F1.8  
B/W (IR-On): 0 Lux / F1.8
- IR illuminator: 12pcs of LEDs, effective up to 10m with wide angle
- Shutter Time: 1/7.5 sec. to 1/24,000 sec

### Video

- Compression: H.264/MPEG-4/MJPEG
- Frame rates: up to 30fps at 1280x720
- Image Settings:  
Adjustable image size, quality and bit rate  
Brightness, contrast, saturation, sharpness, white balance and exposure  
Time stamp and text caption overlay  
Flip & mirror, AGC/AWB/AES

### Audio

- Audio streaming: 1-way
- Compression: G.711
- Interface: built-in microphone

### Networking

- Network: 10/100 Mbps Ethernet, RJ-45
- PoE: 802.3af class2
- Security: Admin/User account level,  
Password protection, WEP/WPA/WPA2, WPS button
- ONVIF compatible (Profile S)
- Protocol: IPv4, TCP, UDP, DHCP, NTP, DNS, DDNS, SMTP, FTP, HTTP, PPPoE, UPnP, NFS / Samba client, QoS/DSCP, RTP, RTSP, 3GPP
- Built-in Internal Antenna Gain: 3dBi
- Wireless Interface: IEEE 802.11b/g/n

### Alarm and Event / Recording

- Event trigger: Motion/Audio-In Detection
- Event Notification: Email/Push-Notification
- Pre-alarm and post-alarm (5 sec)
- Schedule Recording
- Event Actions: File upload to NFS/SAMBA/FTP/SMT/Local-SD-Card/EnGenius-Cloud & Play Audio
- EnGenius Smart Recording (\*the function only available with EnGenius Cloud Router/Gateway)

### Physical & Environmental

- Local Storage: MicroSD/SDHC slot
- Power Input: 12V/1A
- Dimension (LxWxH): 496x65.3mm
- Weight: 228g
- Operation Conditions:  
Temperature: 0°C ~ 45°C  
Humidity: 10% ~ 80%
- Interface:  
All-in-one cable:  
RJ-45: 1 x 10/100BASE-T (802.3af PoE)  
DC jack (DC12V/1A)  
WPS, Reboot, Reset button  
Micro SD/SDHC slot  
Reset button
- Certification: FCC/CE/LVD

### Viewing system requirements

- Operation system: Microsoft Windows XP/2000/Vista/2003/2008/7
- Web browser: IE, Safari, Chrome, Firefox, Opera
- View clients: Live viewing for up to 5 clients

## Technical Specifications (SW)

### EnViewer (Mobile App.)

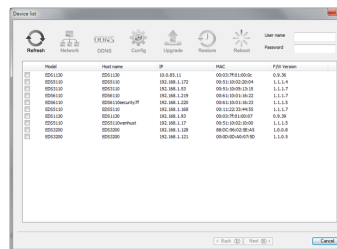


- EnViewer Mobile APP: Smart Phone OS (iOS v6.0 / Android v2.3 or above)
- Smart Search (EnGenius Cloud Router/ Gateway Only) / Manual Add (QR Code / Hyperlink)
- Share your camera with your family and friends
- Cam Live View / Group View
- Cam snapshot / Record on APP
- Push Notification / Play Back
- Remote Camera Settings



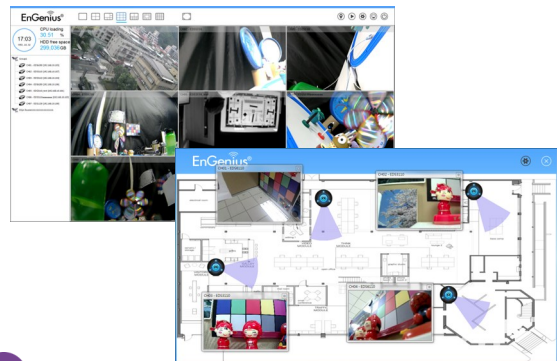
### EnViewer Finder by EnGenius

- Support OS: Windows XP/ 2000/ Vista/ 2003 /2008 /7 /8)
- Single / Group camera setting
- Network, uPNP, admin's password setting
- UID/DDNS setting
- Video configuration
- Firmware upgrade
- Restore to default
- Reboot the camera



### Video Management Software (VMS)

- Support OS: Windows XP/ 2000/ Vista/ 2003 /2008 /7 /8)
- Free bundle a 16ch recording software
- Support H.264/MPEG4/MJPEG
- Live View, Record and playback
- eMAP with camera icons and mini live view
- Dual monitor management
- Time base search bar on Playback



### EnGenius Smart Record

- An individual link and folder will be automatically established when the EnGenius IP Camera is connected to the EnGenius Cloud Router/ Gateway for saving schedule streaming and event message to the USB device attached to the Router. The storage folder name and Camera Name can be modified from the router control page. The storage video will be overwrite by the EnGenius Router/Gateway when the USB device is full.



Current IP-Camera Profile

No.	Name	IP Address	MAC	Recording	Motion	Over-Write	Folder Name	Select
1	Living Room	192.168.1.101	00026F778890	<input checked="" type="checkbox"/>	<input checked="" type="checkbox"/>	<input checked="" type="checkbox"/>	Living	<input type="checkbox"/>

USB Available Space

IP Camera Name

Recording

Motion-Detection

Over-Write

Folder Name

\*the "smart record" control page on EnGenius Cloud Router/Gateway web page.

Maximum data rates are based on IEEE 802.11 standards. Actual throughput and range can vary depending on many factors including environmental conditions, distance between devices, radio interference in the operating environment, and mix of devices in the network. Features and specifications subject to change without notice. Trademarks and registered trademarks are the property of their respective owners